



# CRYSTAL UNIT

## CSX-1612

### Applications

- Automotive / MultiMedia / Bluetooth

### Features

- Ultra thin / Dimensions (1.6×1.2×0.45)
- Ceramic SMD Package
- Excellent Environment Resistant
- Tight Tolerance and Stability
- Reflow Soldering / Emboss Taping
- Compliant products with AEC-Q200

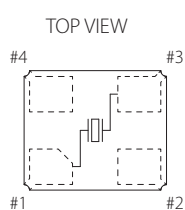
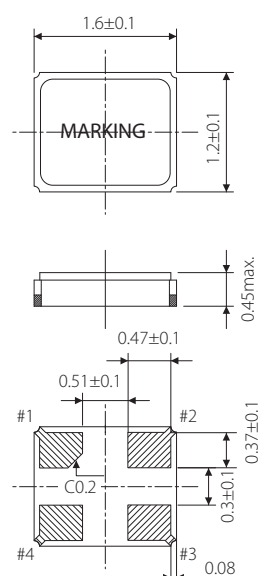
### Specifications



Model	CSX-1612
Nominal frequency range	26.000~40.000 MHz
Crystal cut	Fundamental [AT-cut]
Storage temperature range	-40~+125°C
Operating temperature range	-40~+85°C ; -40~+125°C
Frequency temperature characteristics (Ref. to +25°C)	$\pm 50 \times 10^{-6}$ ; $\pm 100 \times 10^{-6}$
Frequency tolerance (at +25°C)	$\pm 15 \times 10^{-6}$
Equivalent series resistance	100Ω: 26.000~29.999 MHz 80Ω: 30.000~40.000 MHz
Load capacitance	8pF
Shunt capacitance	5pF max.
Level of drive	10 μW (100 μW max.)

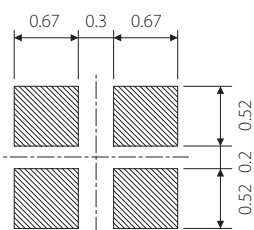
Package quantity: 3,000pcs max./Reel.

### Outline and Dimensions [unit:mm]



- #1,#3 : Crystal terminal
- #2 : GND(Connected to cover) #4 : GND(NC)

Example of a Terminal Land Pattern



Maximum marking length		Marking
line1	line2	
4	4	Laser
ex.)		<div style="border: 1px solid black; padding: 5px; display: inline-block;">                     40 . 0 S G A                 </div>

